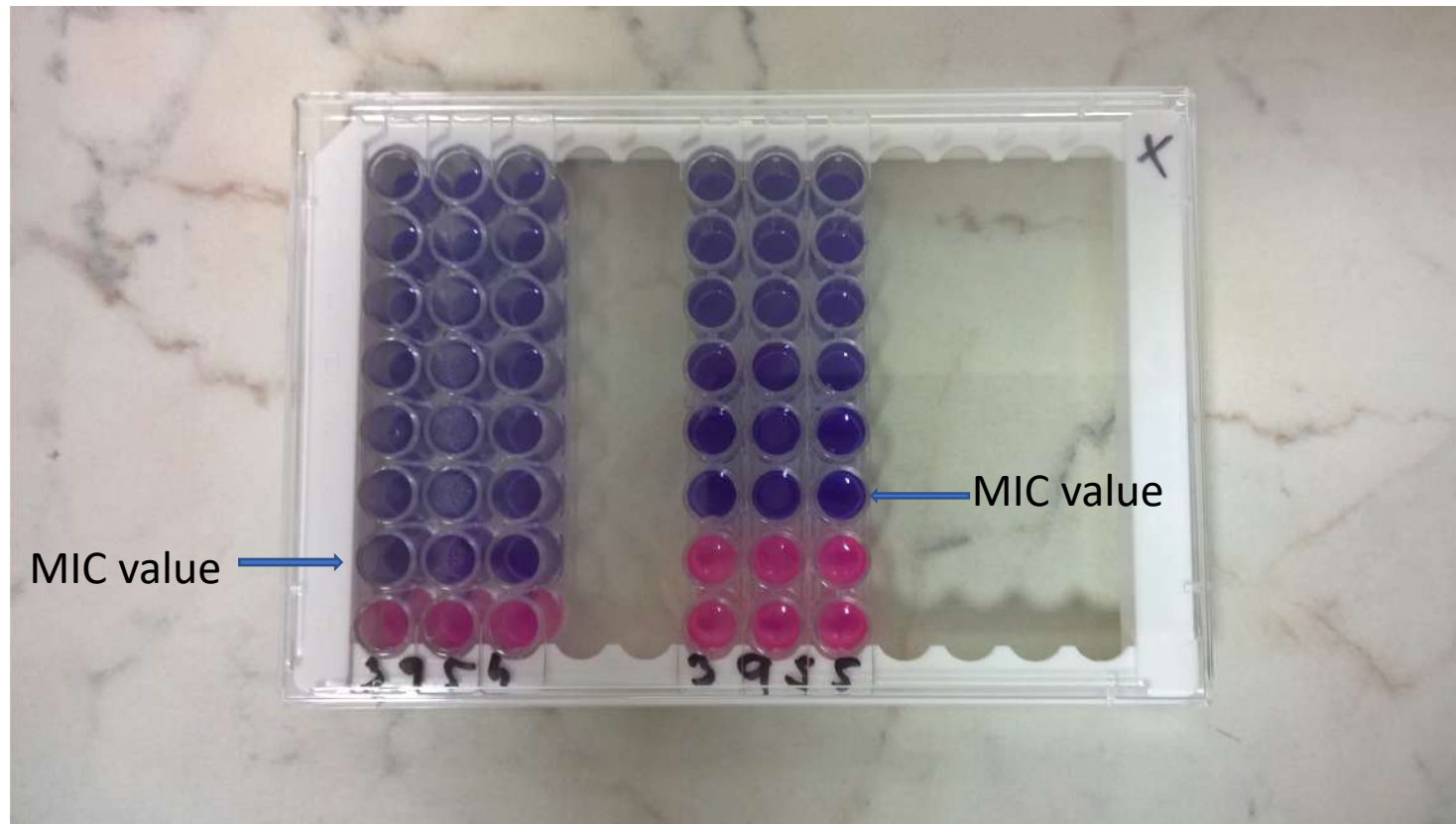


MIC reading manual

MIC reading rules:

Reading of MIC kits = comparison of **each** microwell color **vs. positive control** microwell!

MIC value = 1. microwell with significantly different color from color of positive control microwell !
Don't compare microwell color between themselves, but only against positive control microwell!



Exceptions:

- After MIC value determination it was observed more than one positive microwell = **MIC value does change.**

Corrected MIC value
(OK) →

Original MIC value
(wrong) →



Exceptions:

- After MIC value determination it was observed one positive microwell exactly = **MIC value doesn't change.**

Corrected MIC value
(wrong) →

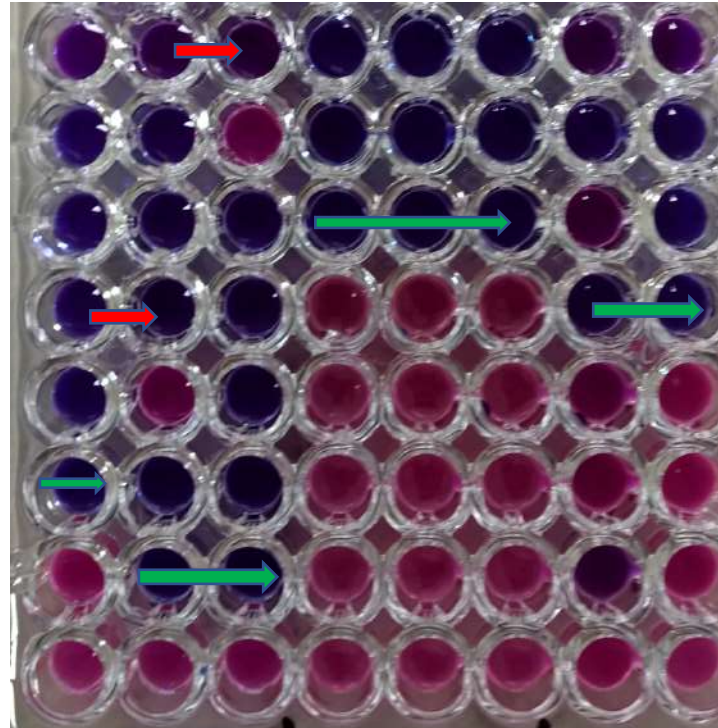
Original MIC value
(OK) →



Example of reading of problematic MIC microplate

Original MC value →
(OK)

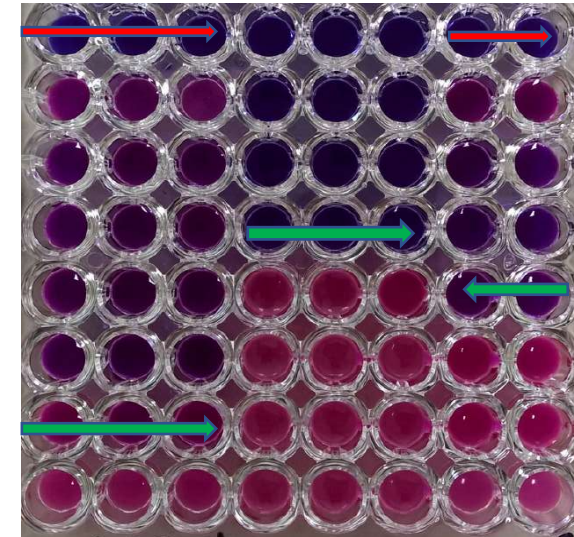
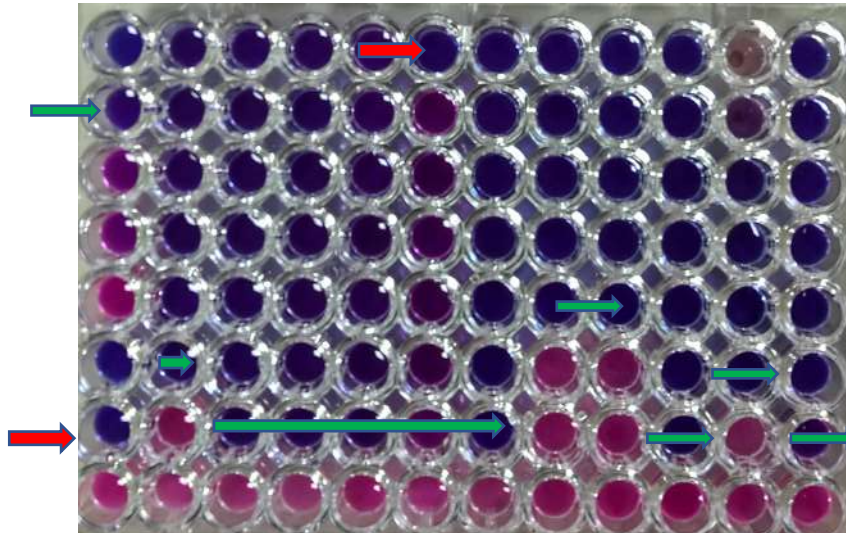
Wrong MIC value →



Don't compare microwell between themselves, only with positive control microwell *(right bottom corner of microplate)*

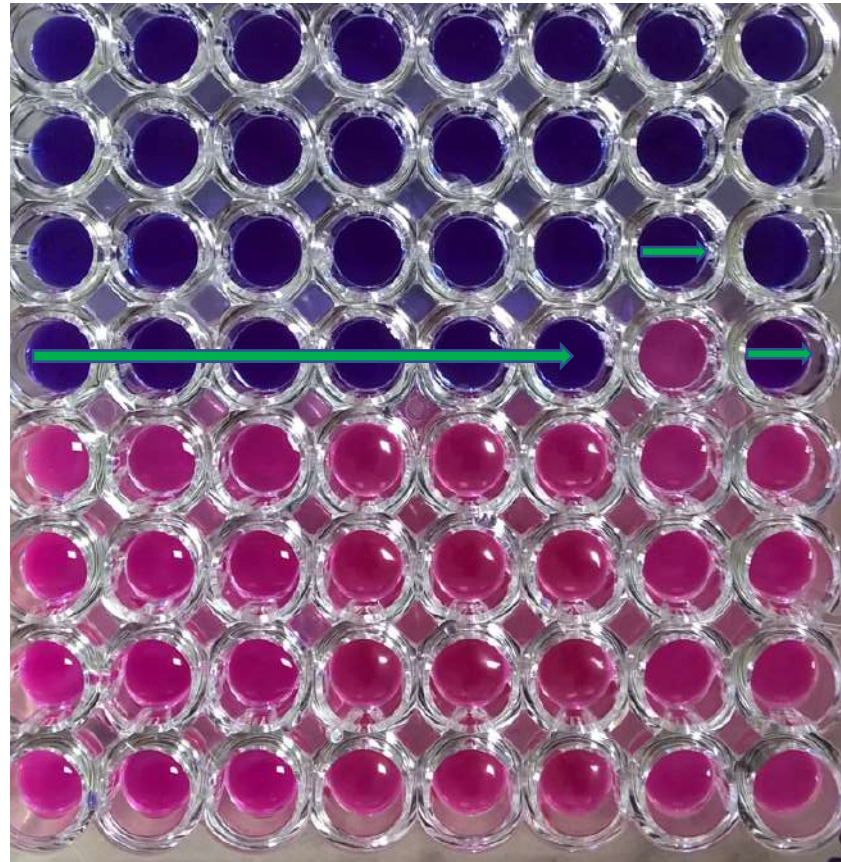
Original MC value →
(OK)

Wrong evaluation! →



Example of reading of common MIC microplate

Original MC value →
(OK)



In case of your question, please contact us for support
via e-mail: info@diagnostics.sk

We can help you with evaluation of your samples photo.

We can train your laboratory personal

See our MIC video tutorial

